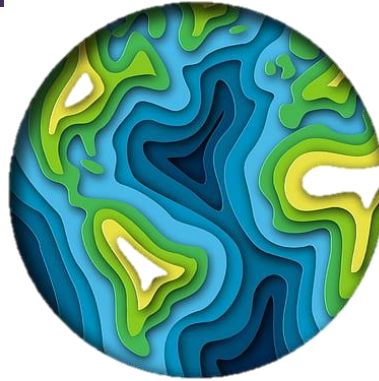
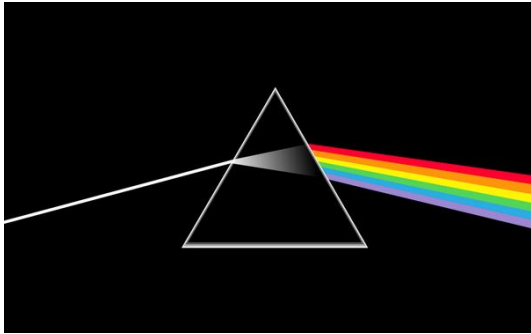
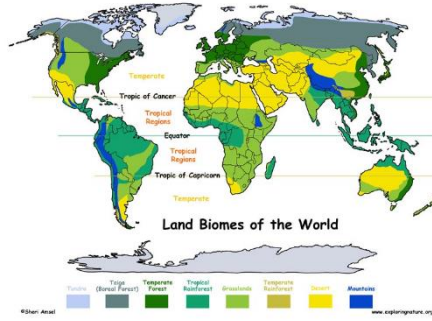




# Birch Newsletter

## Spring 2

Hello to all of our Parents and Carers,  
Welcome back after half term. I hope you all enjoyed it. Below is some information on what we are learning about this half term.



 same	 different	 pattern
 repeat	 Maths	 repeating
 symmetry	 Pattern and symmetry	 next
 after	 before	 missing
 continue	 line of symmetry	 fold

### What we are learning about this half-term:

English – Non-Fiction texts

Maths – Multiplication, pattern and symmetry

Art – Planets – abstract earth

Science – Light

Geography – Planet earth: mountains, volcanoes, the water cycle, earthquakes and tsunamis

Music – Listening and performing

Computing – Branching databases

P.E – Tennis

PSHE – Caring for the environment

R.E – The Pentecost – Why was it important to Christians

JASS – Being active!

**Just a few reminders:**

1. Our PE day is **Monday** so pupils can wear their kit into school.
2. Forest school is **Monday** as well so children can bring Wellies in or old trainers if they have them.
3. JASS this half term is sport related so please have trainers in school on Tuesdays
4. **Friday** is always dress down Friday or Superhero Friday.
5. ***Home diaries and reading diaries need to be in school every day please*** – please try and read with your child as often as possible and record in the blue or yellow book.